

Mainstreaming biodiversity,
The Costa Rican case.

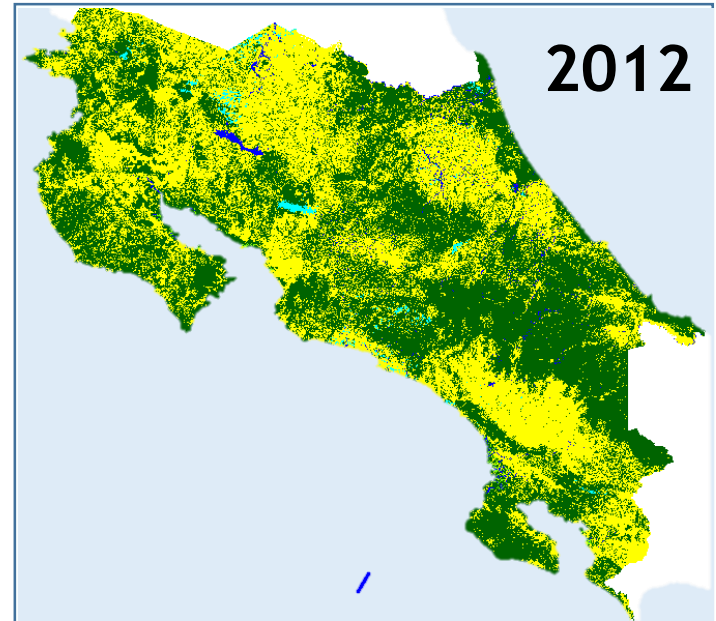


Carlos Manuel Rodríguez

CONSERVACIÓN
INTERNACIONAL



NATURAL CAPITAL AND DEVELOPMENT



GDP /pc : \$3,574

21% Forest cover

Population: 2.7 million

Energy: 70% Hydro,
30% Fossil fuel

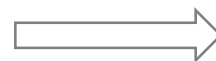


GDP /pc : \$9,219

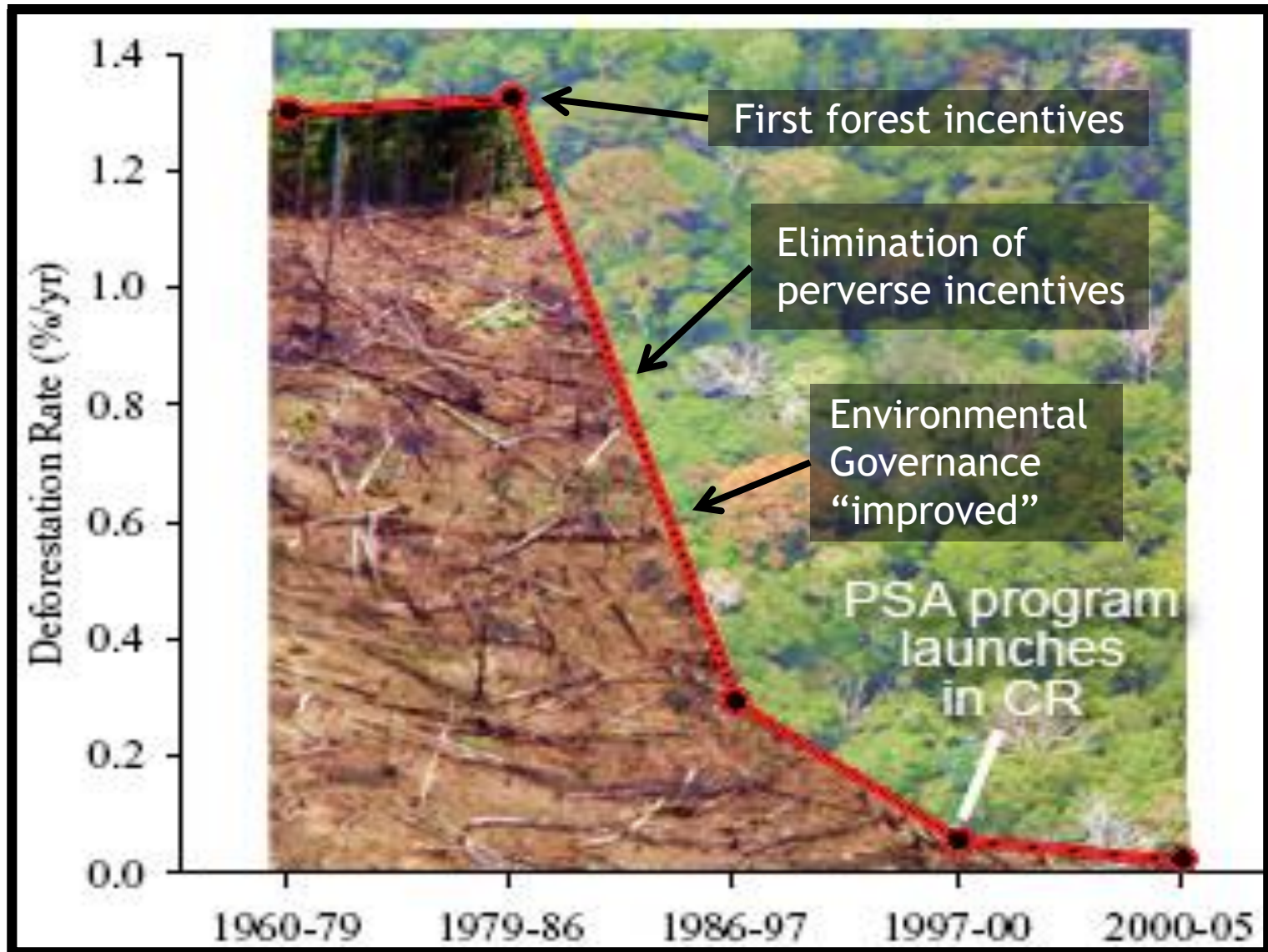
52% Forest cover

Population: 5 million

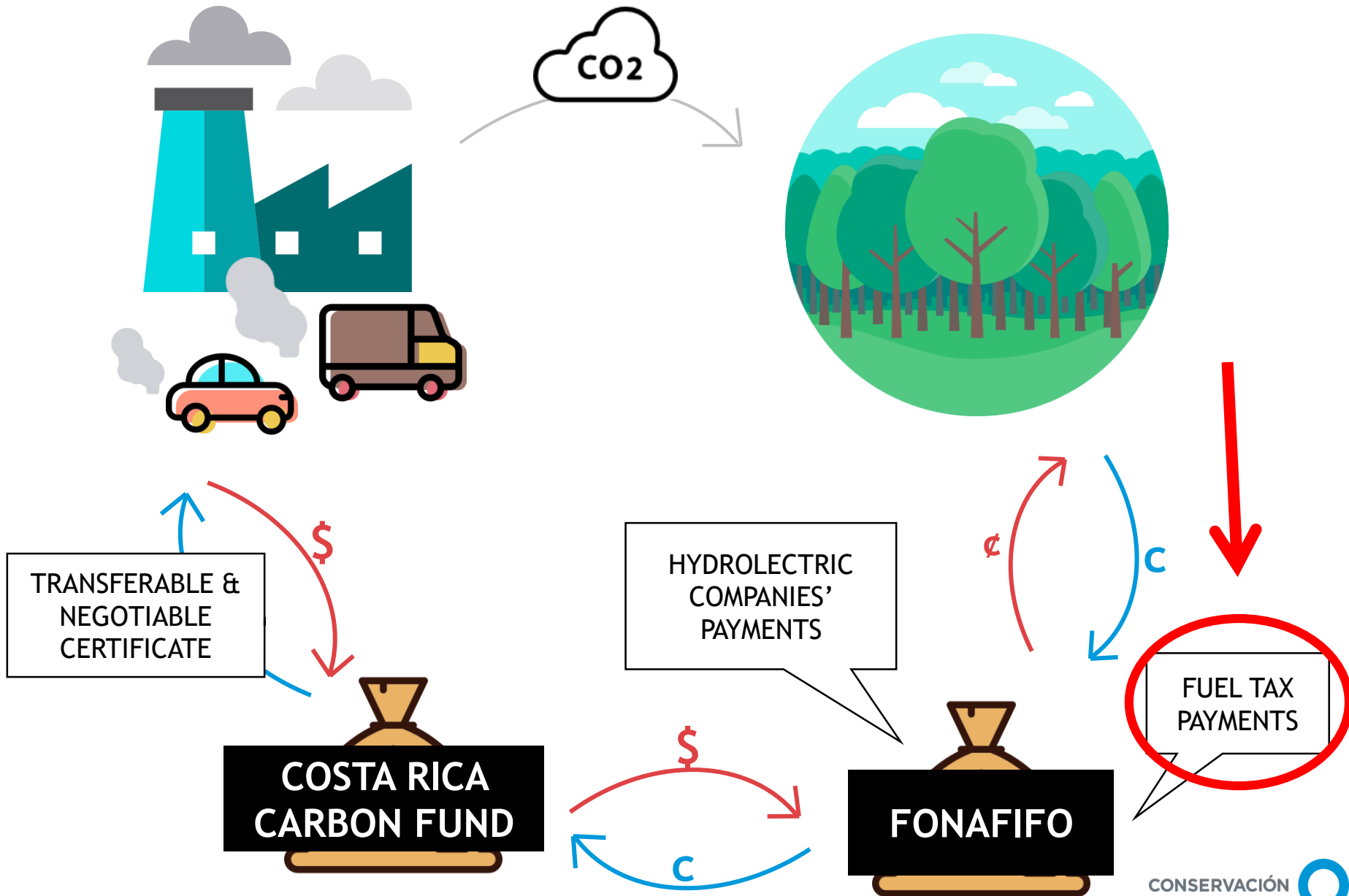
Energy: 98% Hydro, Wind &
Geothermal, 5% fossil fuel



DEFORESTATION RATE IN COSTA RICA, 1960-2005



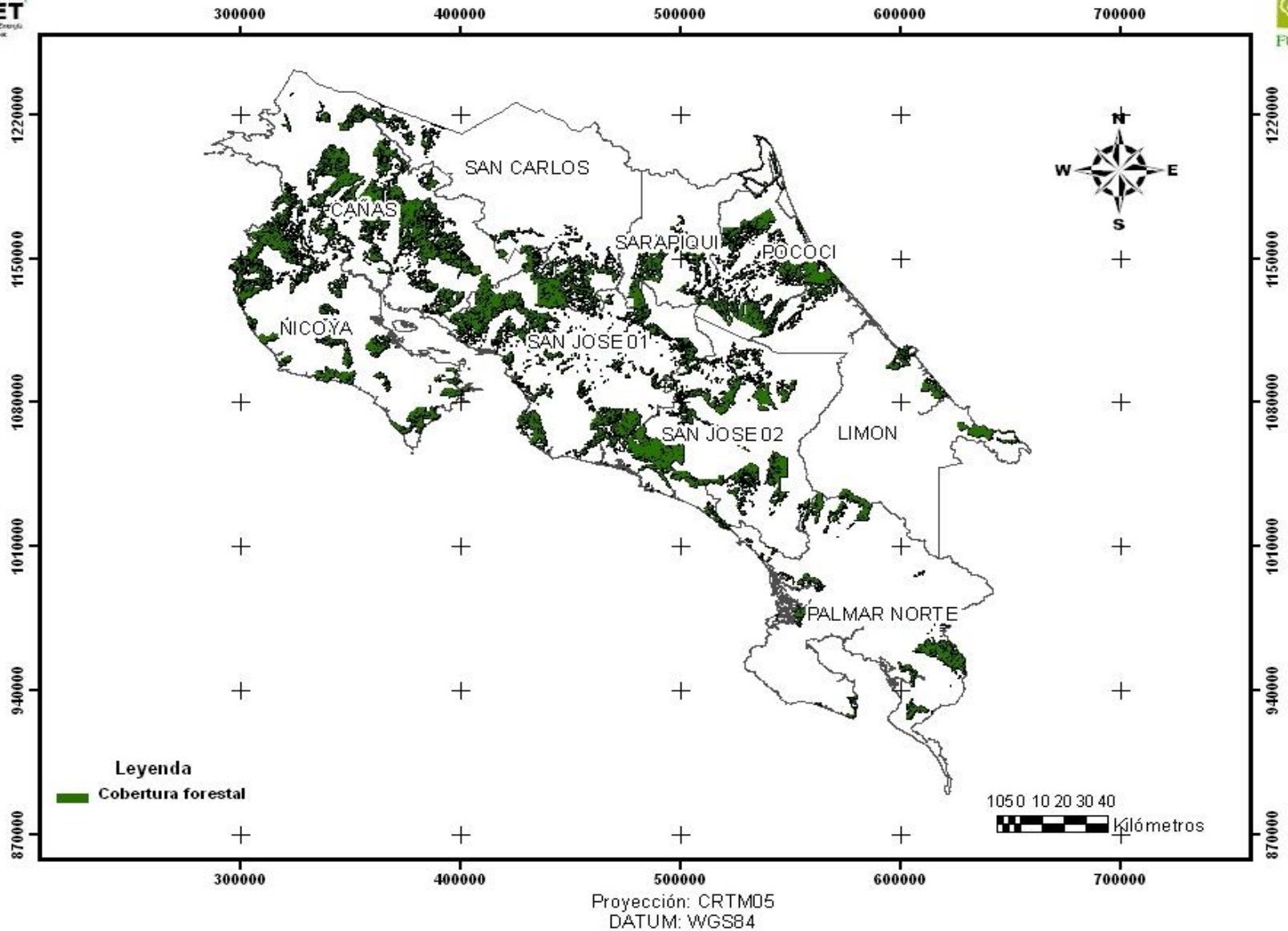
Rationale of the Carbon PES





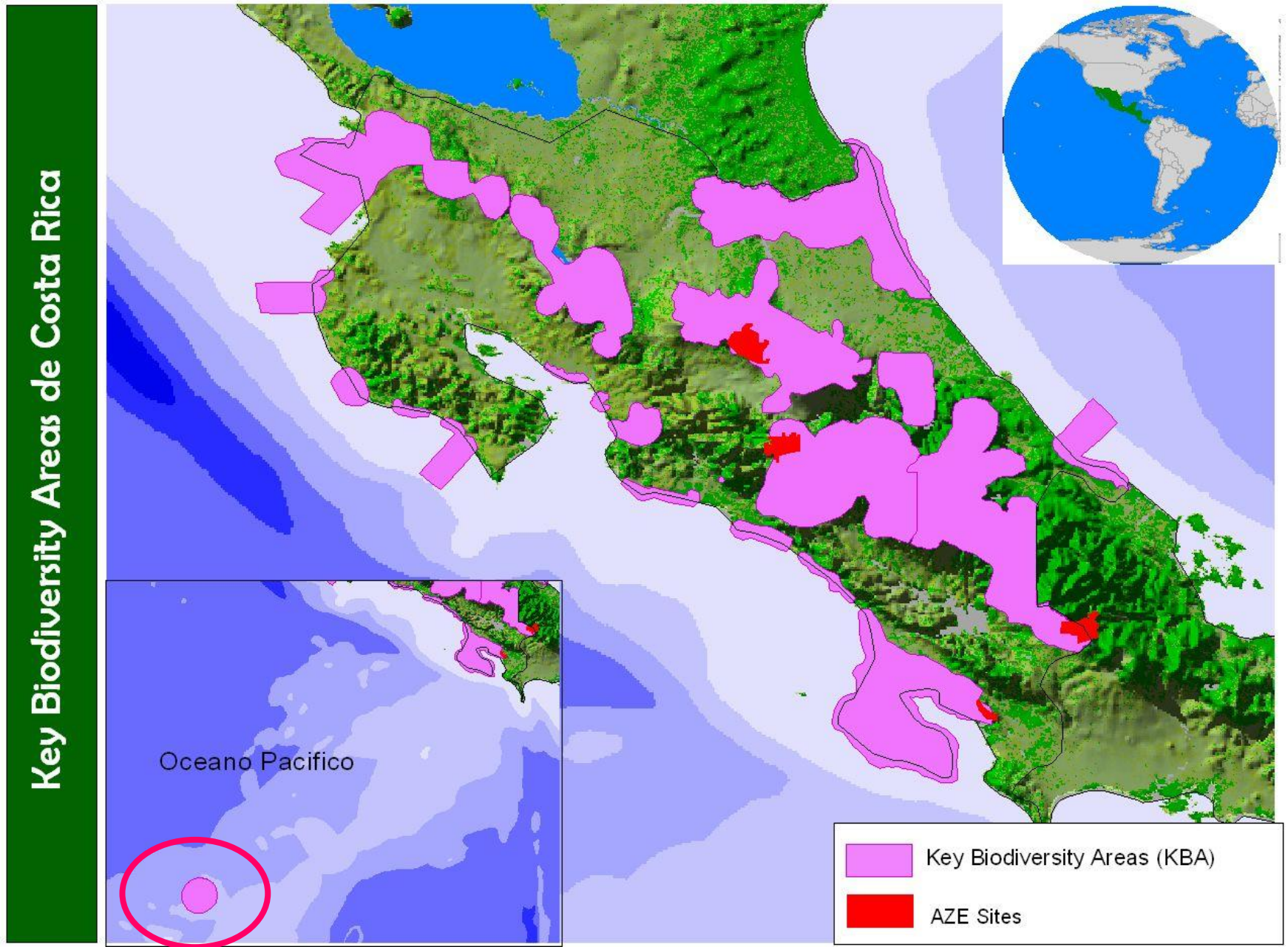
**THE ECOLOGY COST OF WATER
ADJUSTED IN THE WATER RIGHTS
DECREE: AUGUST 24th 2005**

Prioridad hídrica 2011_CRTM05

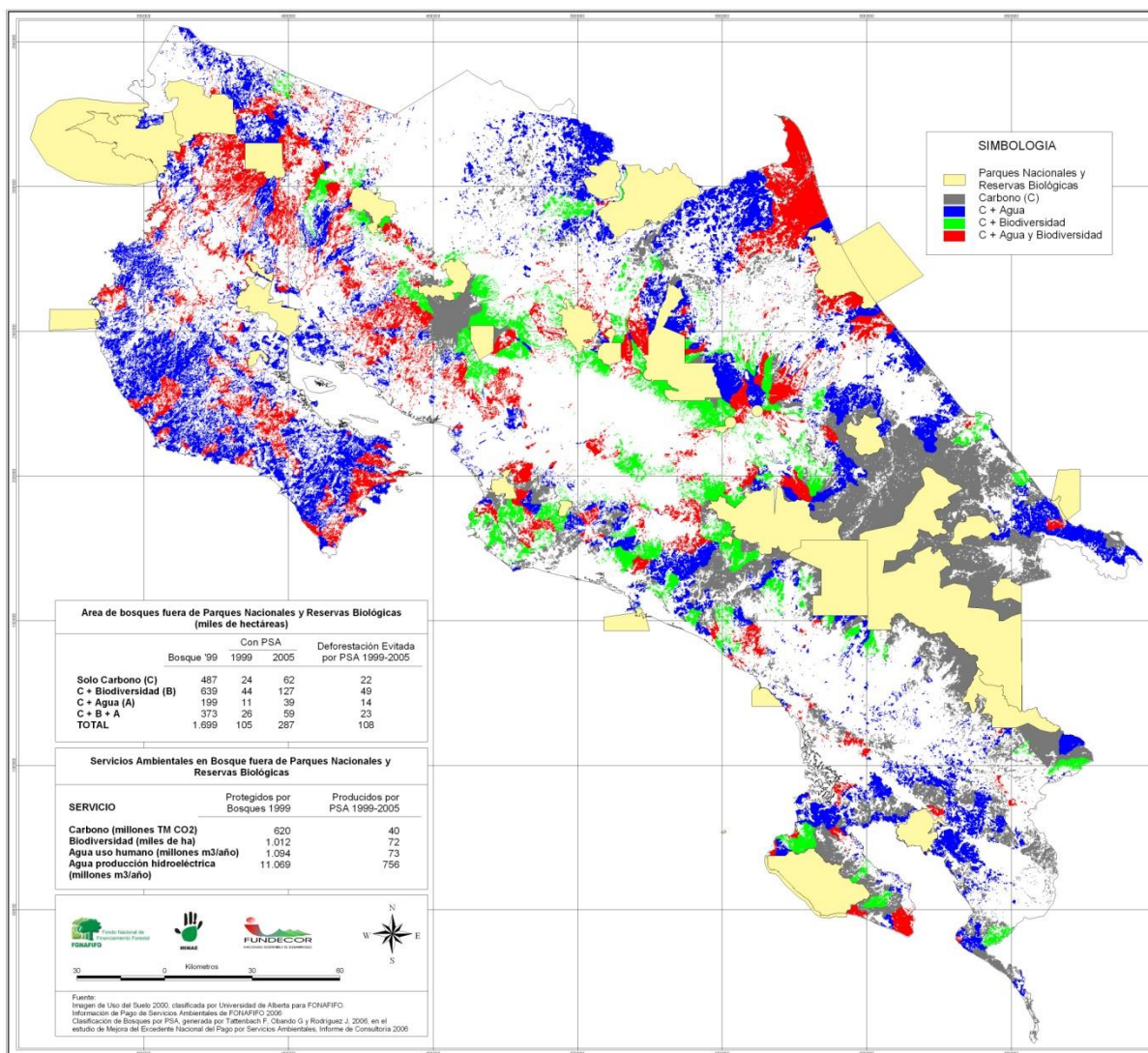


Fuente: Atlas Digital 2008, estudio de Jorge Fallas y delimitación oficinas regionales 2011
Elaborado por: Ing. Verónica Madrigal Mora
Departamento de Control y Monitoreo

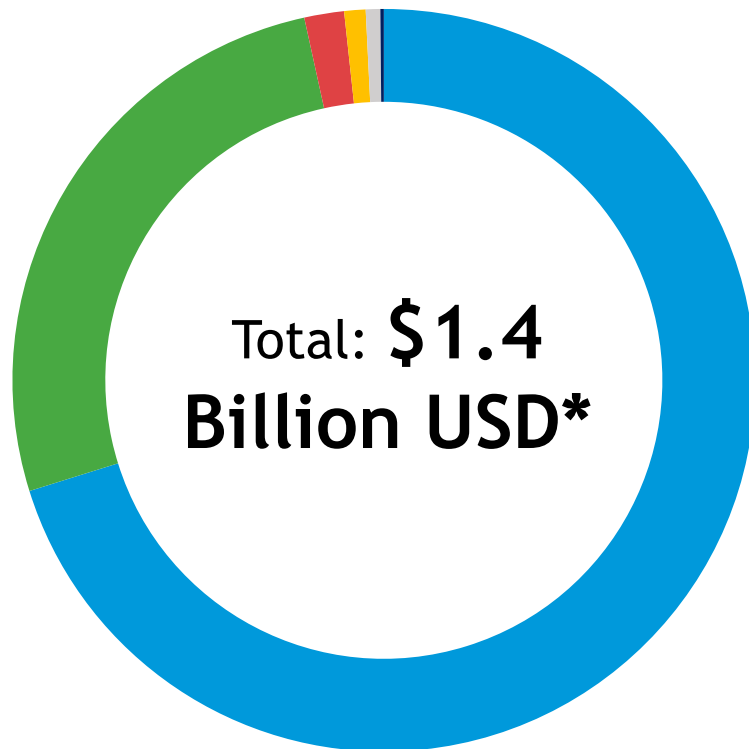
Costa Rica









BOSQUES 2000 FUERA DE PARQUES NACIONALES y RESERVAS BIOLÓGICAS SEGUN TIPO DE SERVICIOS AMBIENTALES



Economic Benefit of National Parks to the Local Economy 2009



-  National Tourism (70.2%). [Hospitality, food, transport]
-  Electricity generation (26.4%). [Estimate based on plants near ASP.]
-  Direct/indirect employment (1.7%)
-  Income from entrance fees (0.9%)
-  Funding for conservation of ASP (0.6%)
-  Others (0.15%). [Funding for research, visits, employment, PSA, land purchase.]

* Exchange Rate: 573 colons per dollar

National Parks Contribution to the GDP 2012

National Parks	5.5 %
Agriculture	7.7 %



UNFCCC



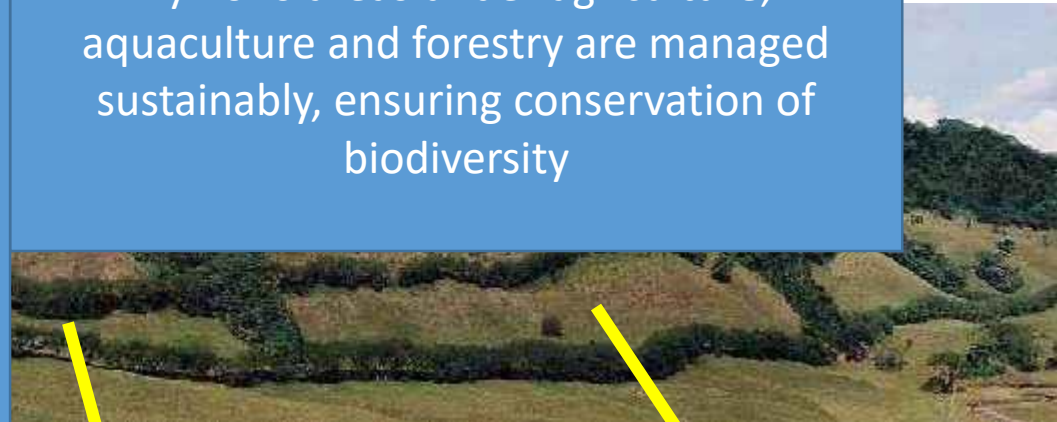
landsca
can p

Target 15

By 2020, ecosystem resilience and the contribution of biodiversity to carbon stocks has been enhanced, through conservation and restoration, including restoration of at least 15 per cent of degraded ecosystems, thereby contributing to climate change mitigation and adaptation and to combating desertification.

Target 7

By 2020 areas under agriculture, aquaculture and forestry are managed sustainably, ensuring conservation of biodiversity





BIOFIN in Costa Rica

BIOFIN Methodology

Finance Policy Institutional Review

190 policies and practices, 131 institutional actors in 14 sectors

Biodiversity Expenditure Review

First estimates:
Average of 0,5% of GDP for 2010-2014, or US\$250 million per year

Financial Needs Assessment

First estimates:
0,18% of GDP per year for next 10/15 years or US\$90 million per year.



Support Appropriate Policy

1. Support policies that recognize and reward ecosystem services and cover opportunity costs.
2. Support policies that ensure that private sector decisions account for non-market impacts and benefits in operations and site choices.
3. Support policies that identify and reduce perverse incentives.
4. Include green economy concepts/assessments at the highest possible level of development planning and policy.
5. Improve measurement: GDP does not account for key development issues - need to account for the green economy via credible, existing metrics.



“Damn! They are spending my grandchildren's inheritance !!”

!!! MUCHAS GRACIAS !!!